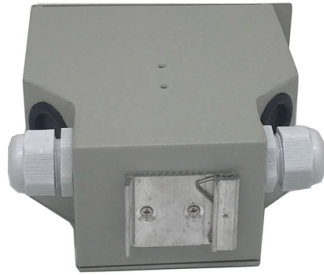


# What are the shielding methods for cable trays



## Overview

Solid-bottom trays provide strong shielding by blocking EMI from external sources. Enclosed trays (trough or channel) offer the highest protection since they completely surround the cables. or Unshielded Tray Cable?

Tray cable is comprised of two or more insulated conductors, a ground conductor, and a protective jacket. It is a versatile option for various types of installations. As technology advances, understanding how these trays function becomes increasingly important for engineers. If you're installing a cable tray system, you want to know whether it blocks interference or not. All illustrations, descriptions and technical information included in this document are provided as indications and can cable trays are equivalent. The mechanical and electrical characteristics, tests, certifications, overall quality management, recommendations mentioned. maintain spacing or to keep cables in place when the tray is ect the minimum bend ra-dius for cables as they exit the bottom of the cable tray.



## Article Content

Jan 06, 2026

G-iron® shielded cable trays: a new approach for cable ...

G-iron shielded cable trays: a new shielding approach for cable trays: these trays are different from the traditional ones.

Dec 17, 2025

Tray Cable Shield: Should I Choose Shielded or Unshielded Tray Cable?

Selecting shielded or unshielded tray cable depends on the application and installation requirements. Shielded cables are necessary in environments with high electromagnetic interference (EMI) to ...

Sep 25, 2025

Maximizing Safety: The Significance of Tray Cable Shielding

Shielding helps offset those effects in power and communication cables, sensitive electronics, and network systems near the cabled electrical system. Placing a layer of foil or braided metal between ...

Jul 04, 2025

Cable Tray Shielding Capability: How Well Does It Protect Your Cables?

Solid-bottom trays provide strong shielding by blocking EMI from external sources. Enclosed trays (trough or channel) offer the highest protection since they completely surround the ...

Jul 01, 2025

The Importance of Tray Cable Shielding

Shielding helps offset those effects in power and communication cables, sensitive electronics, and network systems near the cabled electrical system. Placing a layer of foil or braided ...

Nov 12, 2025

Cable Tray Shielding Capability: How Well Does It ...

Solid-bottom trays provide strong shielding by blocking EMI from external sources. Enclosed trays (trough or channel) offer the highest protection ...

Jun 26, 2025

GUIDE CABLE TRAYS TECHNICAL

NEMA VE 1-2017 Specifies requirements for metal cable trays and associated fittings designed for use in accordance with the rules of Canadian Electrical Code, Part I and the National Electrical Code®

Jun 09, 2026

Cable Tray Technical Guide A practical guide to product selection ...

The choice of method should be discussed with a local inspector. The best decision may be to extend only the cables, creating a discontinuity in the cable tray.

Oct 06, 2025

How Shielding Cable Tray Works — In One Simple Flow (2025)

Some trays incorporate conductive materials or coatings to enhance shielding effectiveness. The design varies—ladder, solid-bottom, or wire mesh—each suited for specific ...

Jul 15, 2025

A Guide to Installing and Supporting Electrical Cable Trays

Ventilated troughs are excellent for smaller control and instrumentation cables that may sag between the rungs of a ladder tray. For environments with corrosive chemicals or high moisture, composite cable ...

Jun 29, 2025

Tray Cable Shield: Should I Choose Shielded or ...

Selecting shielded or unshielded tray cable depends on the application and installation requirements. Shielded cables are necessary in environments with ...

Sep 17, 2025

7 Types of Cable Trays: How to Choose the Right One

Solid-bottom trays - prioritize cable protection in environments with contaminants or sensitive cables. Wire mesh trays - lightweight, highly ventilated, and flexible; ideal for data, telecom, ...

## Contact Us

For more information, pricing, or custom solutions, please contact us:

Website: <https://professionistidelverde.it>

Email: [info@professionistidelverde.it](mailto:info@professionistidelverde.it)

Phone: +49 176 4829 3715

Address: Friedrichstraße 123, 10117 Berlin, Germany

This document is for informational purposes only. Specifications subject to change without notice.

